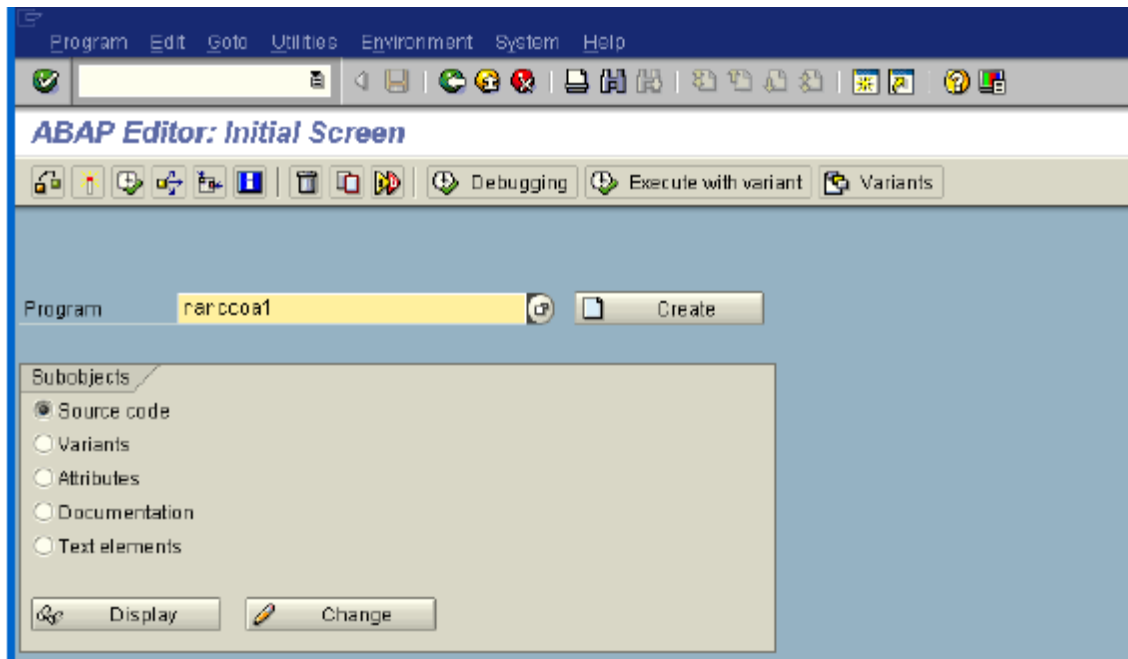



Análise da Base de Dados

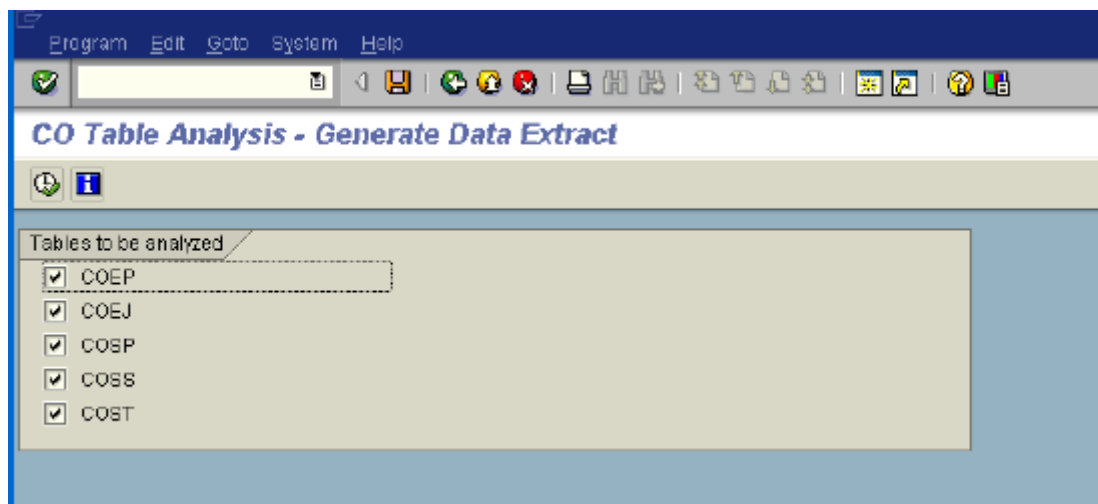
Este procedimento é necessário para analisarmos o Banco de Dados.

Com esta análise podemos avaliar principalmente a tabela COEP.

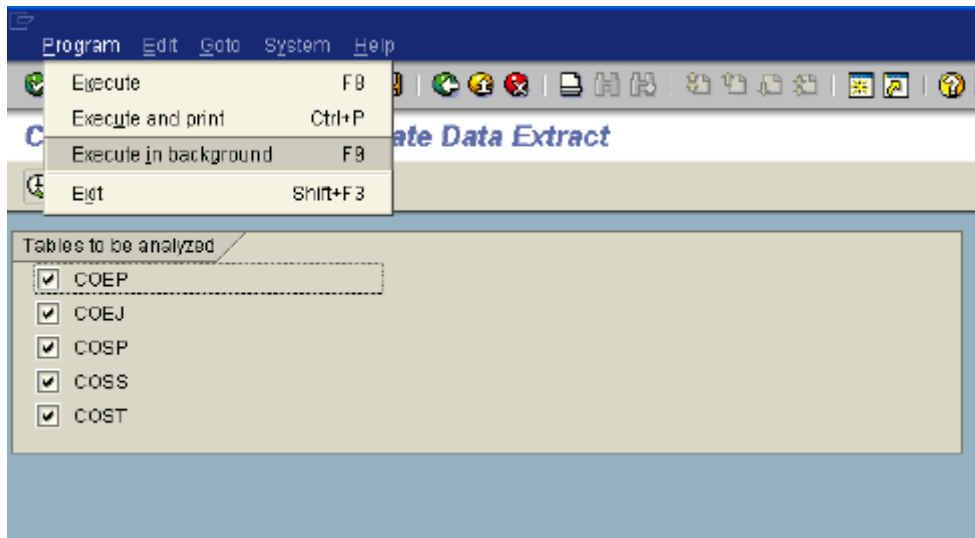
1. Acessar a transação **SE38** e execute o report **RARCCOA1**.




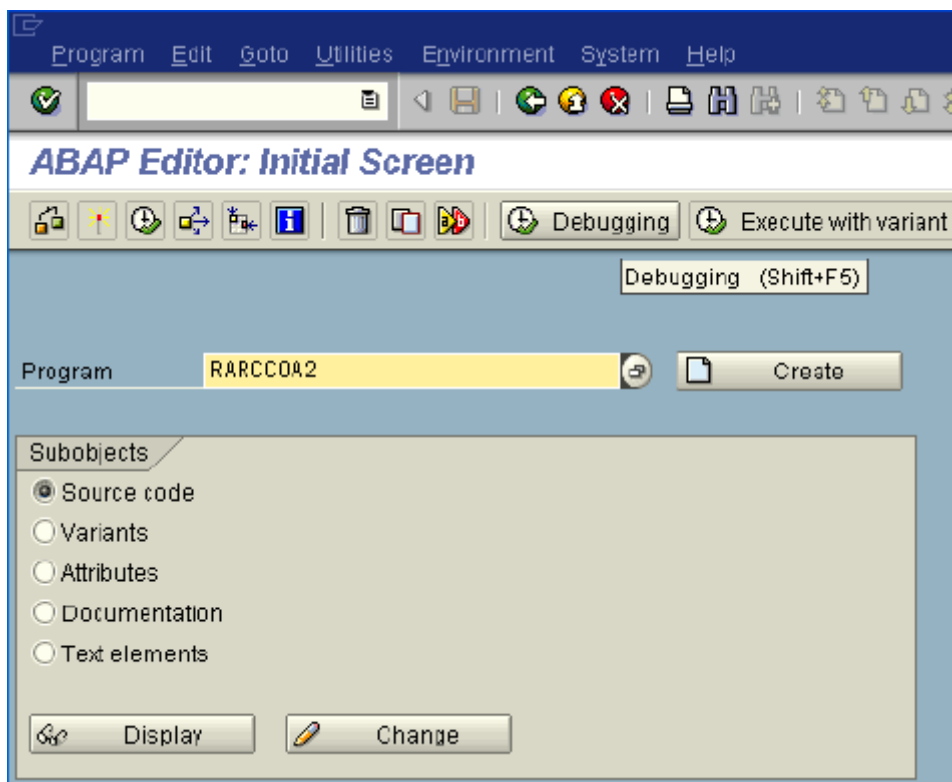
2. Click em executar, , a seguinte tela irá aparecer:
3. Selecione todas as tabelas



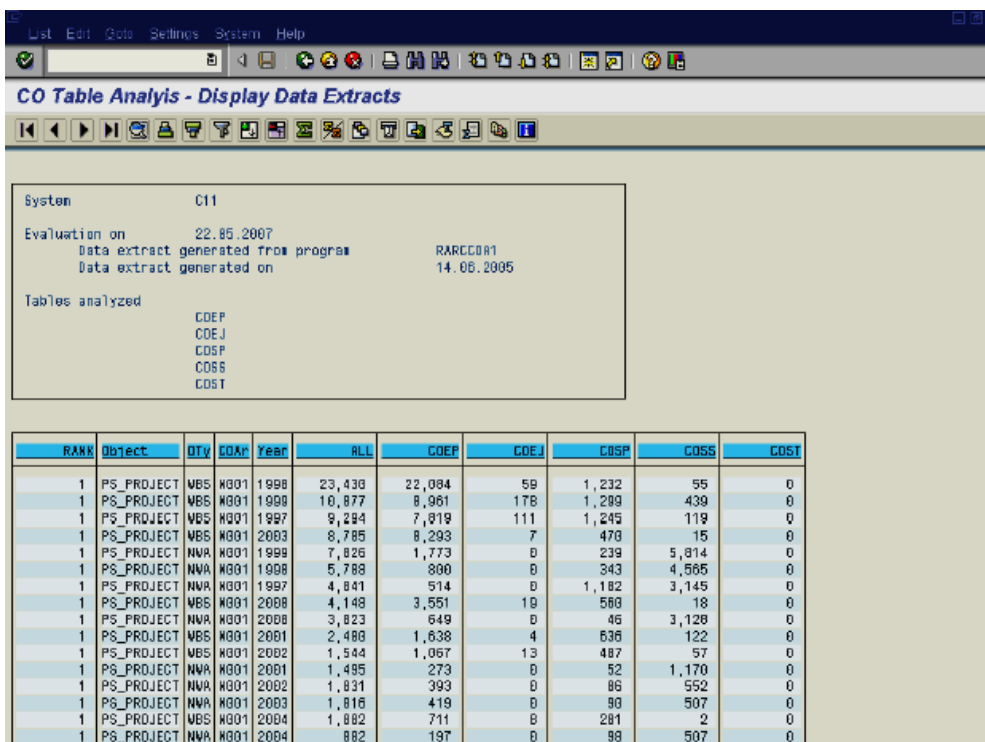
4. Execute em Background. (O job pode demorar)



5. Após o termino do job, execute novamente a transação **SE38** e execute o report **RARCCO02**.
6. Click em executar, .



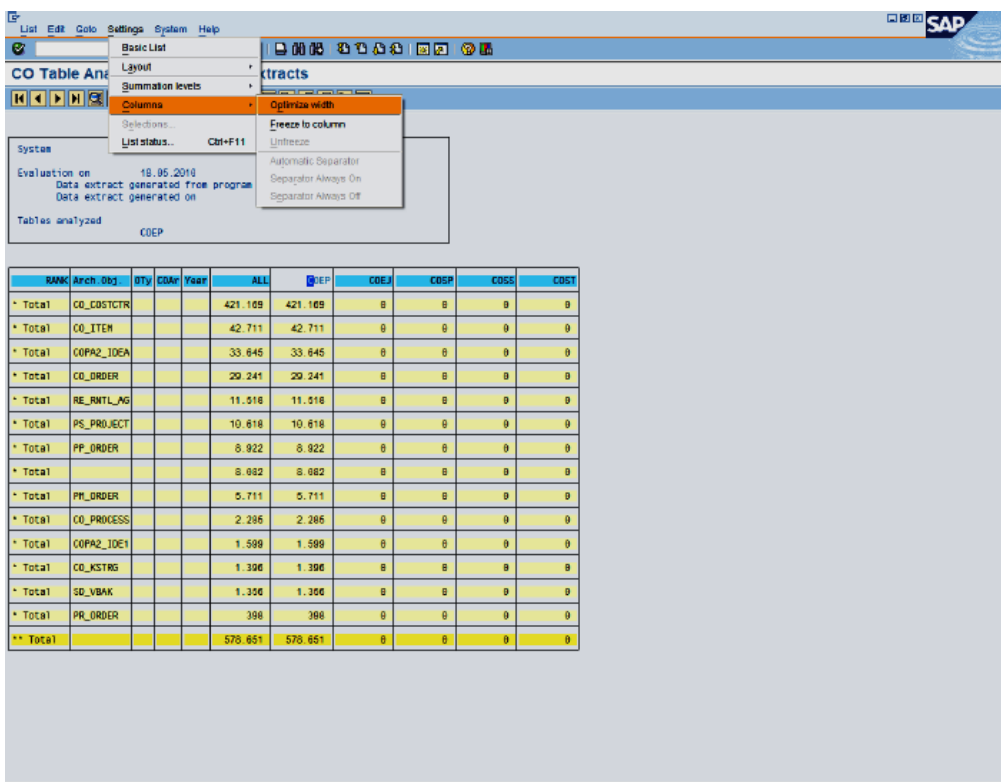
7. A seguinte tela irá aparecer:



System: C11
 Evaluation on: 22.05.2007
 Data extract generated from program: RARCCOR1
 Data extract generated on: 14.06.2005
 Tables analyzed: CDEP, CDEJ, CDSP, COSS, COST

RANK	Object	DTY	COAR	Year	ALL	CDEP	CDEJ	CDSP	COSS	COST
1	PS_PROJECT	WBS	0001	1998	23,430	22,084	59	1,232	55	0
1	PS_PROJECT	WBS	0001	1999	10,877	8,961	178	1,293	439	0
1	PS_PROJECT	WBS	0001	1997	9,294	7,919	111	1,245	119	0
1	PS_PROJECT	WBS	0001	2003	8,785	8,293	7	470	15	0
1	PS_PROJECT	NVA	0001	1999	7,826	1,773	0	239	5,814	0
1	PS_PROJECT	NVA	0001	1998	5,788	800	0	343	4,565	0
1	PS_PROJECT	NVA	0001	1997	4,841	514	0	1,182	3,145	0
1	PS_PROJECT	WBS	0001	2008	4,148	3,551	19	560	18	0
1	PS_PROJECT	NVA	0001	2008	3,823	649	0	46	3,128	0
1	PS_PROJECT	WBS	0001	2001	2,480	1,638	4	636	122	0
1	PS_PROJECT	WBS	0001	2002	1,544	1,067	13	487	57	0
1	PS_PROJECT	NVA	0001	2001	1,495	273	0	52	1,170	0
1	PS_PROJECT	NVA	0001	2002	1,831	393	0	85	552	0
1	PS_PROJECT	NVA	0001	2003	1,816	419	0	90	507	0
1	PS_PROJECT	WBS	0001	2004	1,882	711	0	281	2	0
1	PS_PROJECT	NVA	0001	2004	882	197	0	98	507	0

8. Optimize a o layout das colunas para uma melhor visualização do formulário:



System: CDEP
 Evaluation on: 18.05.2010
 Data extract generated from program: RARCCOR1
 Data extract generated on: 14.06.2005

Columns menu options: Optimize width, Freeze to column, Unfreeze, Automatic Separator, Separator Always On, Separator Always Off

RANK	Arch. Obj.	DTY	COAR	Year	ALL	CDEP	CDEJ	CDSP	COSS	COST
* Total	CO_COSTCTR				421.109	421.109	0	0	0	0
* Total	CO_ITEM				42.711	42.711	0	0	0	0
* Total	COPA2_IDEA				33.645	33.645	0	0	0	0
* Total	CO_ORDER				20.241	20.241	0	0	0	0
* Total	RE_RMTL_AG				11.516	11.516	0	0	0	0
* Total	PS_PROJECT				10.618	10.618	0	0	0	0
* Total	PP_ORDER				8.922	8.922	0	0	0	0
* Total					8.982	8.982	0	0	0	0
* Total	PR_ORDER				5.711	5.711	0	0	0	0
* Total	CO_PROCESS				2.285	2.285	0	0	0	0
* Total	COPA2_IDE1				1.599	1.599	0	0	0	0
* Total	CO_KSTRG				1.396	1.396	0	0	0	0
* Total	SD_VBAK				1.356	1.356	0	0	0	0
* Total	PR_ORDER				398	398	0	0	0	0
** Total					579.651	579.651	0	0	0	0

9. Faça o download em formato excel, guarde em um arquivo local. Como foi feito na transação DB02.

Envie-nos o arquivo para realizarmos a análise do banco de dados.